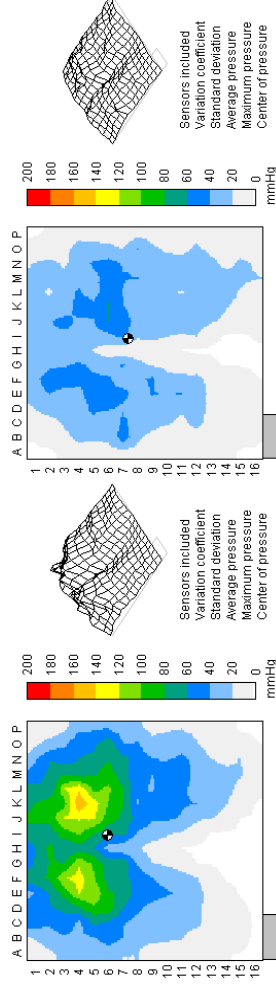


Airelite Standard and Airelite Deluxe

The Airelite Standard system has a fixed pressure air core, pre-inflated to cater for the average sized person.

The Airelite Deluxe system has an adjustable pressure core, achieved by means of a simple hand operated pump with combined pressure gauge. This system allows the cushion to be easily adjusted to provide maximum benefit to any size or weight of user.

The pressure maps shown below demonstrate the difference between a standard good quality chair and the Airelite Deluxe pressure system. Maximum pressures are reduced from 150mm Hg. to 50mm Hg.



Airelite Alternating

Ten 50mm Air Cells, operating sequentially on an A/B cycle from a variable pressure mains operated pump, form the core of this, the Ultimate System for those at Very High Risk of developing pressure sores.

Carewright Ltd. C6B
 Vivary Buildings
 Spring Lane
 Colne
 BB8 9BD
 Telephone: 01282 869802
 Fax: 01282 865449
 Email: sales@carewright.co.uk
 Web: www.carewright.co.uk

Your Local Dealer:

Carewright

TOTAL SEATING SOLUTIONS



AIRELITE SEATING SYSTEM

**THE REVOLUTIONARY
 AIRLITE SEATING SYSTEM**

AIRELITE SEATING SYSTEM

Correctly proportioned Lift and Recline Chairs provide many well-established benefits for people with limited mobility, particularly the elderly, but prevention of pressure sores has always been a secondary consideration at best.

The **AIRELITE** Seating System has been developed to combine the latest technology in pressure relief with made to measure, comfortable, attractive and practical, Rise and Recline Chairs, all at an affordable price.

The heart of the **AIRELITE** range is the integrated cushion and legrest system, comprising a modular construction of Reflex and Vasco (Memory) foams, surrounding a choice of three different air flotation systems.

The body of the **AIRELITE** Range is a choice of five chair styles. Each available in a variety of seat heights, widths and depths, including single, dual and the latest four motor systems. Upholstery is available in a wide range of FR Dralons and Vinyls with Panvelle, Freshfields and Fine Leather available to special order.

All chair styles feature a three section silicone fibre backrest, with each section individually adjustable to suit the user. This feature provides exceptional comfort and excellent pressure distribution properties.



Why Combine the Airelite System with a Recliner?

Pressure is calculated by dividing the weight of the body bearing downwards by the area over which that weight is distributed. The area of support of a person when in a reclined position is more than double the area of that when seated; the pressures are therefore more than halved, assuming equal distribution.

A further advantage of an electric recliner in pressure care, is that the points of maximum pressure can be re-positioned by altering the angle of recline. This is especially so with the SKIPTON Recliner, which feature a fixed angle between seat and back, known as 'Tilt-in-Space'.

The Tilt-in-Space design of these chairs reduces shear forces, which can be created whilst adjusting the angle of the back on other recliners. This is of particular importance if the user cannot re-position themselves and assistance is not available.

The Airelite System

Temperature sensitive visco-elastic foams were first developed by NASA for the US Space Program. Body heat and weight softens the foam and allows it to mould itself to the contours of the body, distributing pressure over the widest possible area. The latest foams of this type are called VASCO and manufactured in the UK by Vitafoam.

A composite of Vasco foams is used throughout the **AIRELITE** System, covered with a two-way stretch vapour permeable waterproof material, with a layer of fibre sandwiched between.

This construction helps the skin to remain cool and dry, prevents 'Hammocking', minimises Shear Forces and, in conjunction with the Air Flotation Core of the cushion, provides maximum pressure re-distribution and comfort.